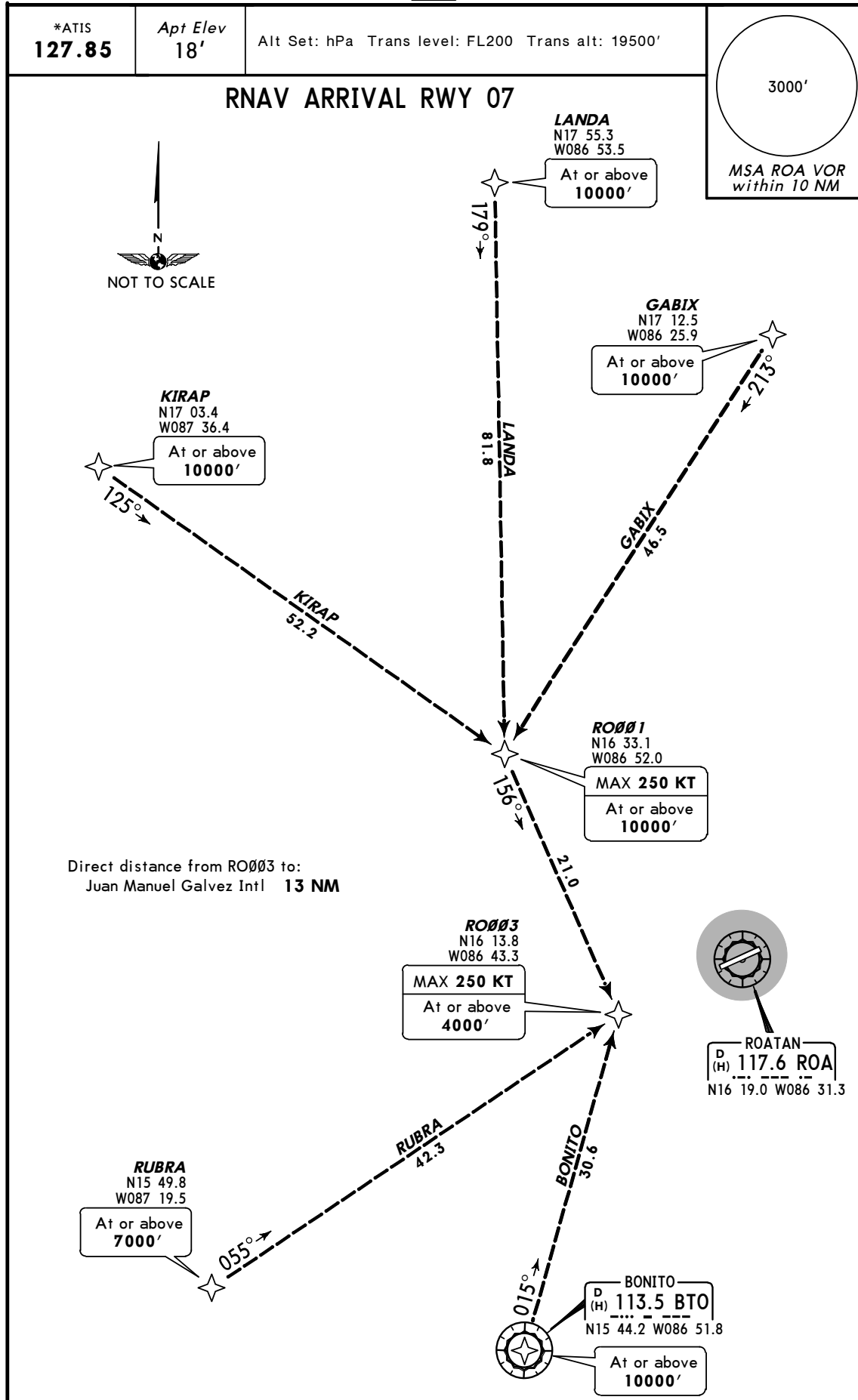


Airport Information

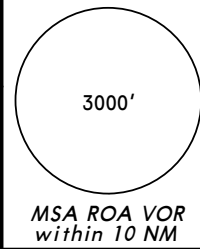
Details for JUAN MANUEL GALVEZ INTL	
City	ROATAN
State/Province	
Country	HND
Latitude	N 16° 19' 02.00"
Longitude	W 86° 31' 20.00"
Elevation	20
Longest Runway	6800
Magnetic Variance	E 0.0°
Fuel Type	JET A-1 fuel is available
Oxygen	Oxygen facilities are unavailable.
Repair Facility	Repair facilities are unavailable
Landing Fee	Unknown.
Jet Start Unit	A starting unit is not available at the airport.
Precision Approach	No charts for the airport support precision approaches
Beacon Light	A beacon light is available.
Customs Facilities	Customs are available without restriction
Usage Type	Airport/Heliport is open to the public.
Time Zone Conversion	+6:00=UTC
Daylight Savings	Airport does not observe daylight savings time
Change Notices Available	none

Terminal Chart Change Notices

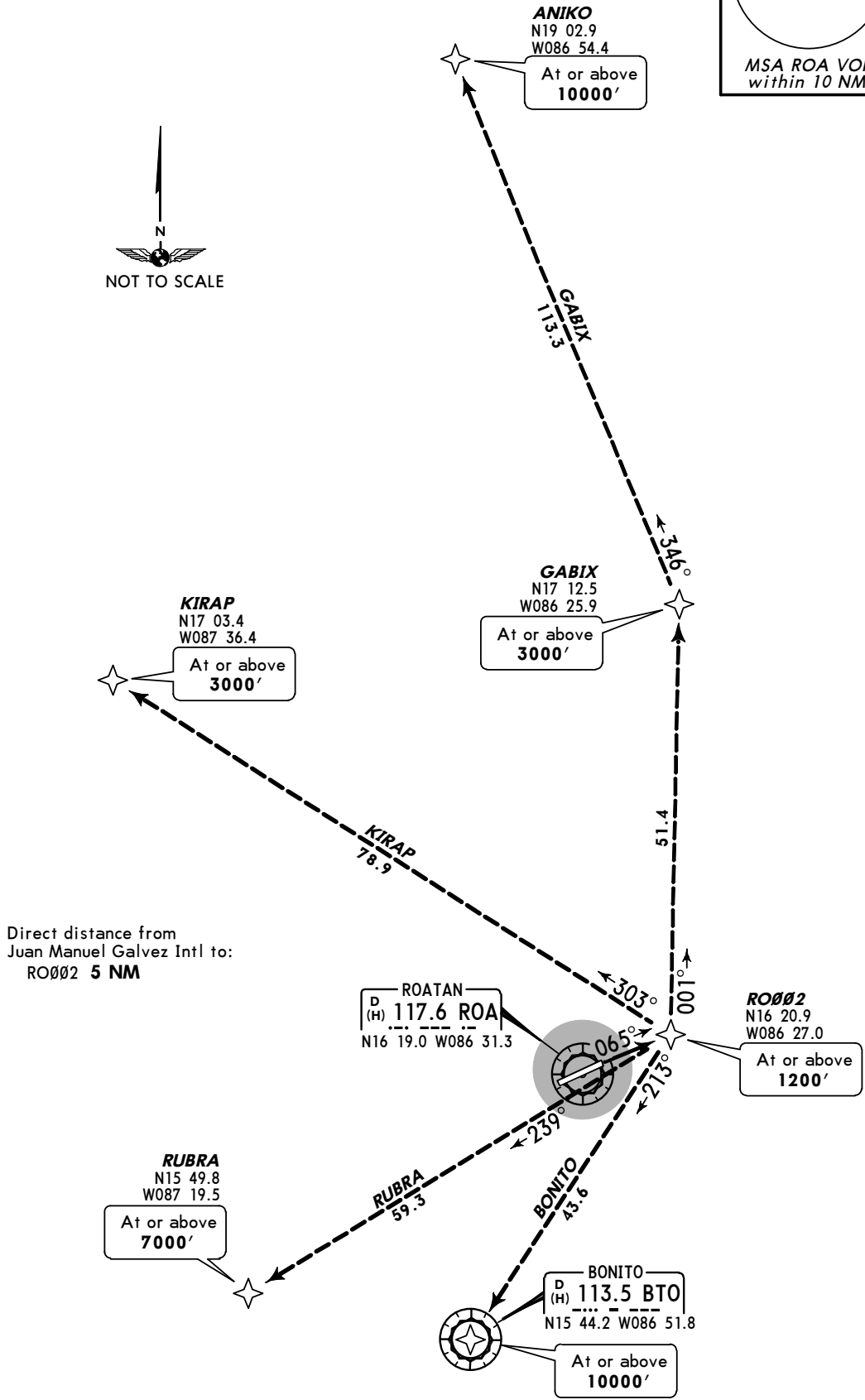


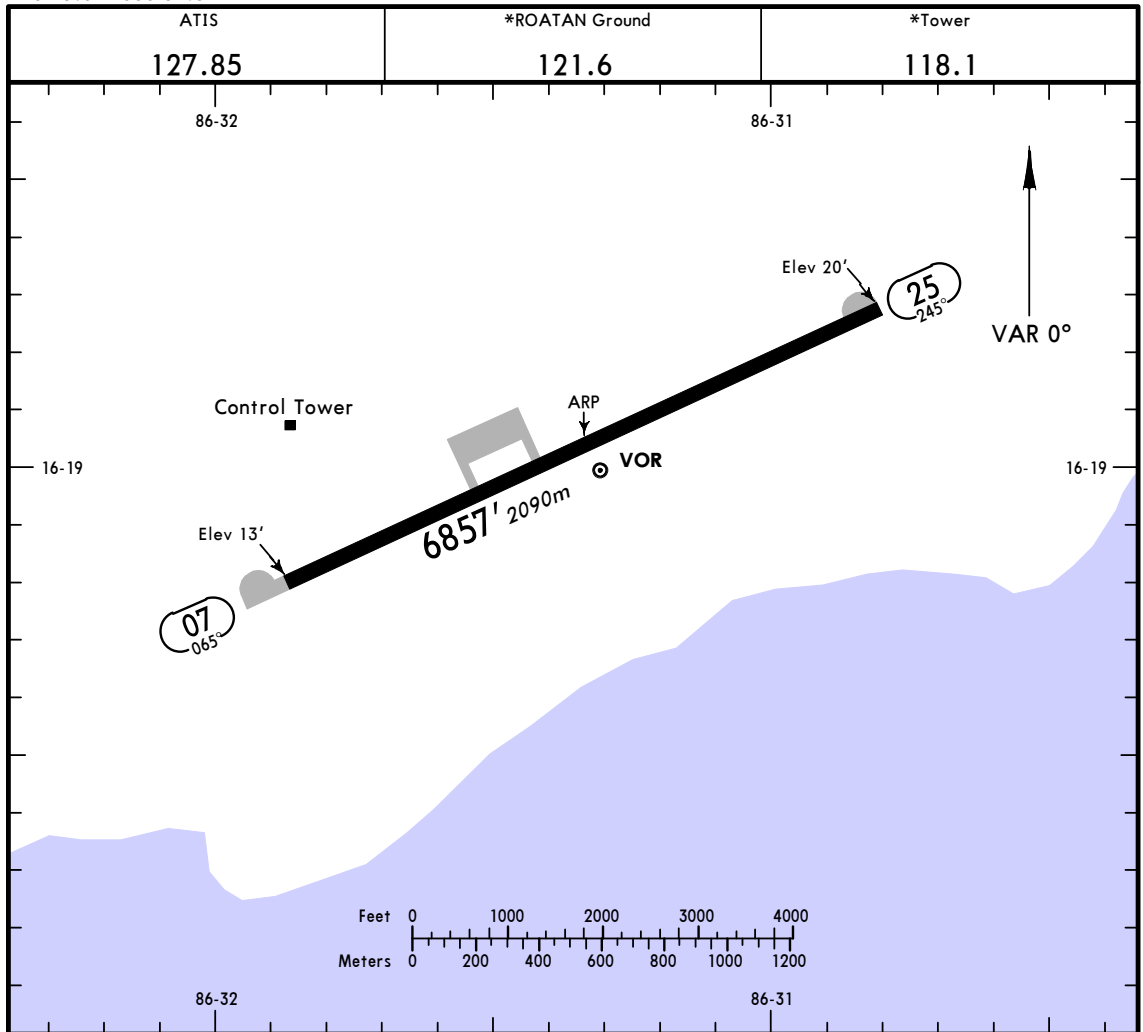
Apt Elev
 18'

Trans level: FL200 Trans alt: 19500'



RNAV DEPARTURE RWY 07





ADDITIONAL RUNWAY INFORMATION

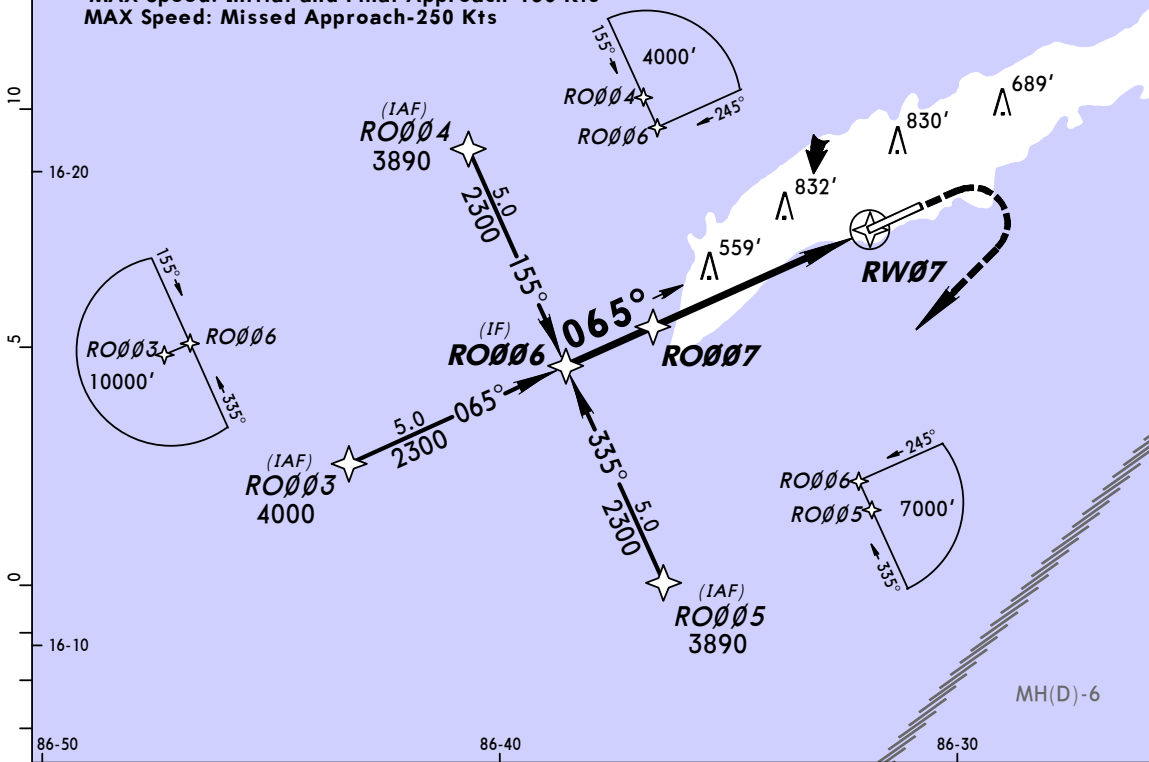
RWY		SURFACE	USABLE LENGTHS		TAKE-OFF	WIDTH
			LANDING BEYOND Threshold	Glide Slope		
07	RL REIL PAPI-L (angle 3.0°)	grooved				148'
25	RL REIL PAPI-L (angle 3.5°)	grooved				45m

TAKE-OFF

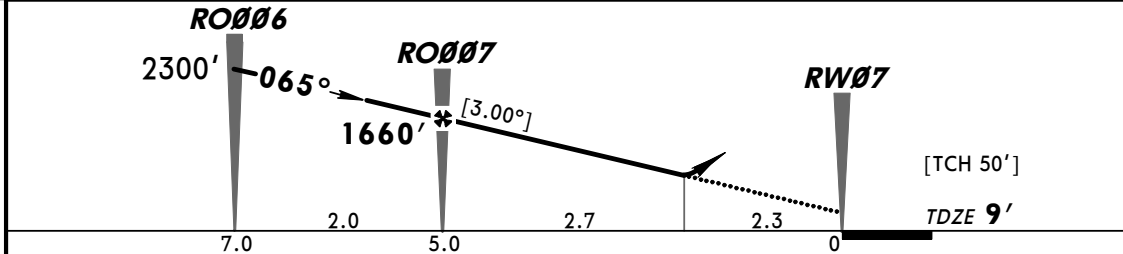
	AIR CARRIER All Rwys		AIR CARRIER (FAR 121)	
	LVP must be in Force RCLM (DAY only) or RL	RCLM (DAY only) or RL	All Rwys Adequate Vis Ref	
A			2 Eng	
B	250m		3 & 4 Eng	400m
C		400m		
D	300m			

ATIS 127.85		*ROATAN Tower 118.1			*Ground 121.6
RNAV	Final Apch Crs 065°	Minimum Alt RO007 1660' (1651')	LNAV/VNAV DA(H) 810' (801')	Apt Elev 18' TDZE 9'	TAA 30 NM IAF
MISSED APCH: Climb to 1200' then turn RIGHT direct to RO005 at 4000'. Request instructions from ATC.					
Alt Set: hPa TDZ Elev: 0 hPa Trans Level: FL 200 Trans alt: 19500'					
1. GPS required. 2. DME/DME not authorized.					

MAX Speed: At IAF-250Kts
MAX Speed: Initial and Final Approach-165 Kts
MAX Speed: Missed Approach-250 Kts



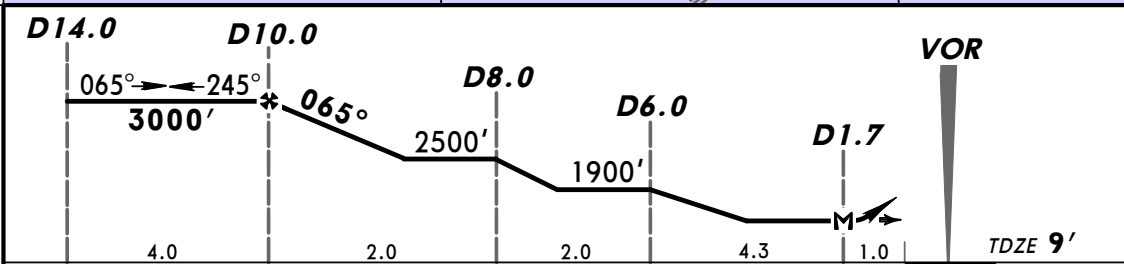
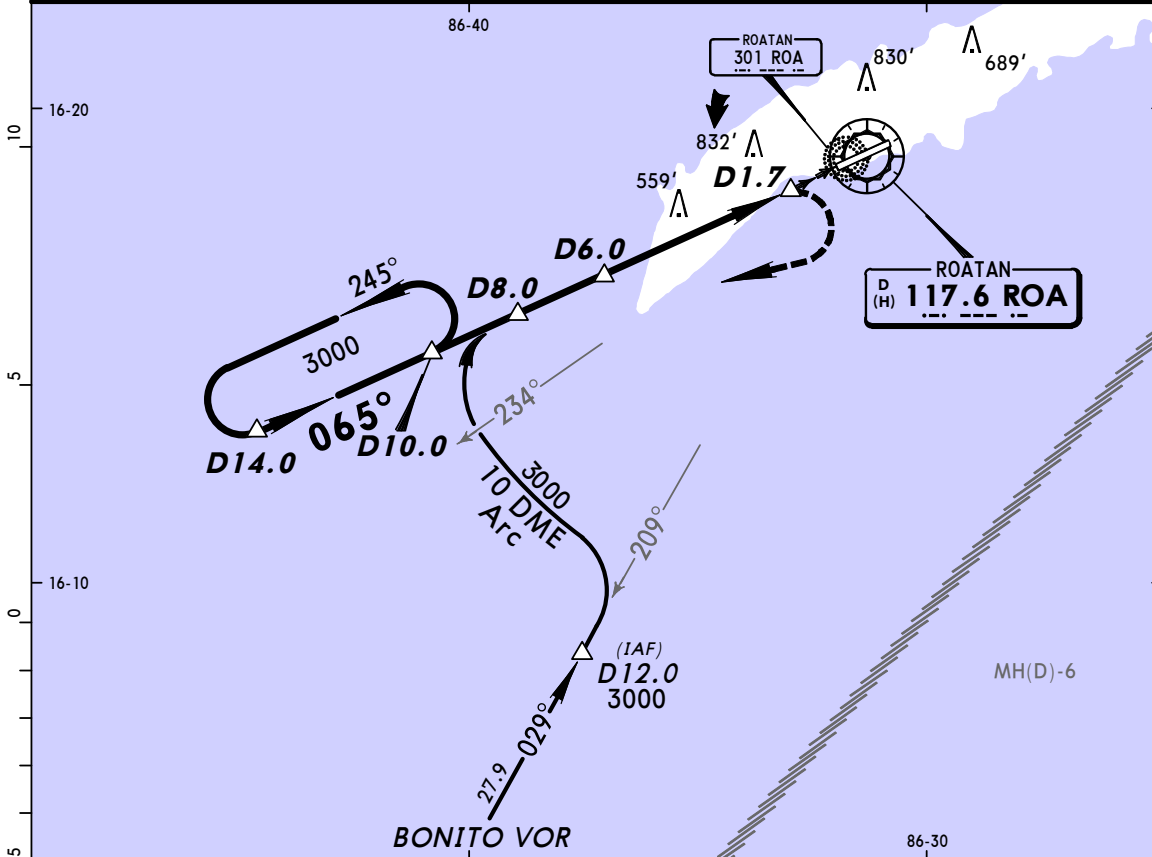
DIST to THR	12.0	7.0	5.0	3.9	2.3
ALTITUDE	3884'	2292'	1655'	1318'	810'



Gnd speed-Kts	70	90	100	120	140	160	REIL	1200'	4000'	→	RO005
Descent angle [3.00°]	372	478	531	637	743	849	PAPI-L	↑	↘	↘	
MAP at DA											

STRAIGHT-IN LANDING RWY07		CEILING REQUIRED		CIRCLE-TO-LAND	
LNAV/VNAV					
DA(H) 810' (801')					
	CEILING-VISIBILITY		Max Kts	MDA(H)	CEIL-VIS
A	800' - 1600m		100	810' (792')	800' - 1600m
B	800' - 2000m		135	810' (792')	800' - 2000m
C	800' - 3600m		180	810' (792')	800' - 3600m
D	800' - 4000m		205	810' (792')	800' - 4000m

ATIS 127.85		*ROATAN Tower 118.1		*Ground 121.6	
VOR ROA 117.6	Final Apch Crs 065°	Minimum Alt D10.0 3000' (2991')	MDA(H) 500' (491')	Apt Elev 18' TDZE 9'	3000' MSA ROA VOR within 10 NM
MISSED APCH: Climbing RIGHT turn to 3000' then return to the holding pattern and request instructions from ATC.					
Alt Set: hPa		TDZ Elev: 0 hPa	Trans level: FL 200	Trans alt: 19500'	

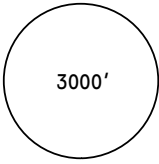


Gnd speed-Kts	70	90	100	120	140	160	REIL PAPI-L	3000' RT	D10.0 HOLDING PATTERN
Rate of descent on final (feet/min)	351	452	502	602	703	803			
MAP at D1.7 or FAF to MAP	8.3	7:07	5:32	4:59	4:09	3:33			

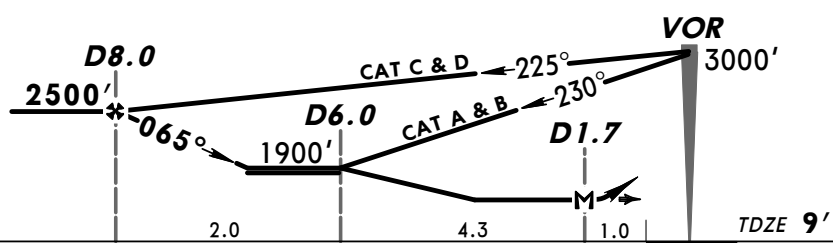
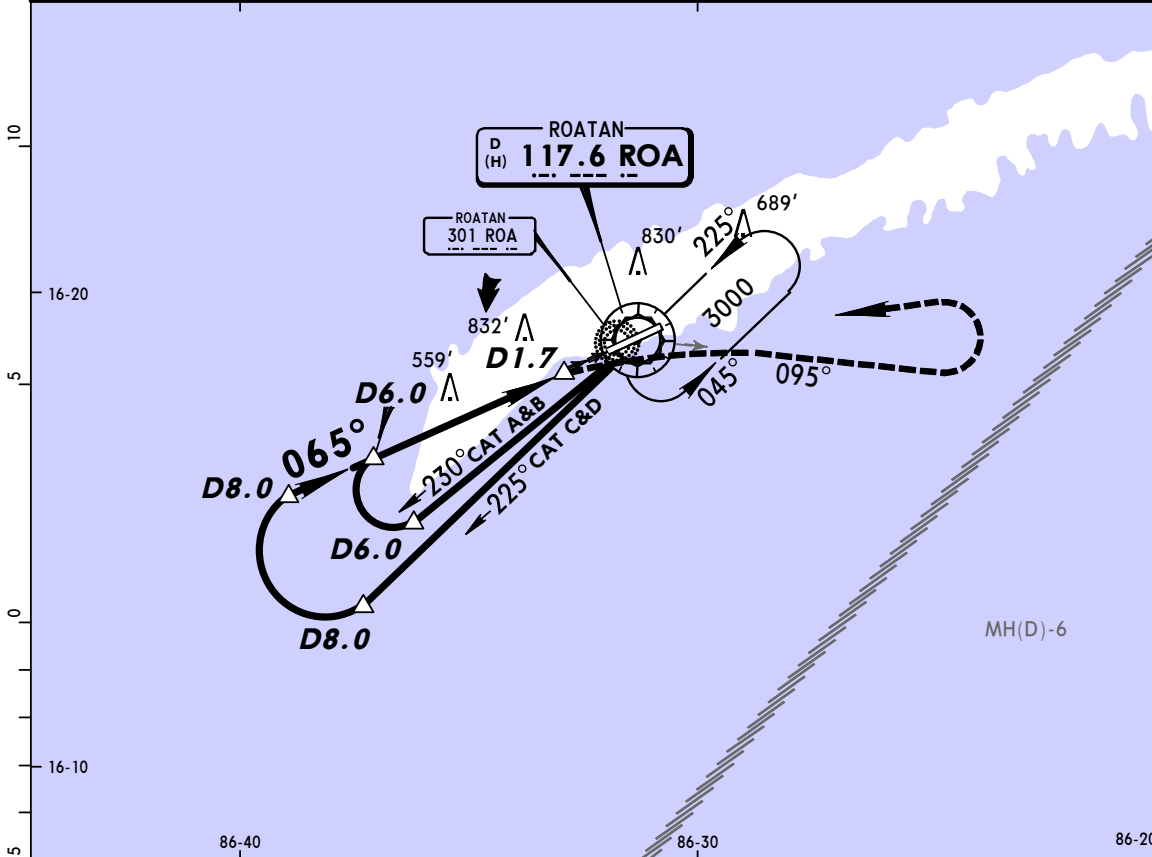
STRAIGHT-IN LANDING RWY 07		CEILING REQUIRED	CIRCLE-TO-LAND
MDA(H) 500' (491')			

PANS OPS	A		A
	B	500'-1 NM	B
	C	500'-1 3/4 NM	C
	D	500'-2 NM	D
		NOT APPLICABLE	

ATIS 127.85		*ROATAN Tower 118.1		*Ground 121.6	
VOR ROA 117.6	Final Apch Crs 065°	Minimum Alt D8.0 (CONDITIONAL) 2500' (2491')	MDA(H) 500' (491')	Apt Elev 18'	3000'
MISSED APCH: Turn RIGHT and climb outbound on ROA VOR R-095 to 3000' then turn LEFT within 10 NM to ROA VOR and hold.					
Alt Set: hPa		TDZ Elev: 0 hPa		Trans level: FL 200	
				Trans alt: 19500'	



MSA ROA VOR within 10 NM



Gnd speed-Kts	70	90	100	120	140	160
Rate of descent on final (feet/min)	370	476	529	635	740	846
MAP at D1.7 or FAF to MAP	6.3	5:24	4:12	3:47	3:09	2:42

REIL PAPI-L	3000'	ROA
	RT	117.6
		R-095

STRAIGHT-IN LANDING RWY 07		CEILING REQUIRED	CIRCLE-TO-LAND
MDA(H) 500' (491')			

A	500'-1 NM	A	NOT APPLICABLE
B	500'-1 3/4 NM	B	
C	500'-2 NM	C	
D		D	