

Airport Information

Details for BOCAS DEL TORO INTL	
City	BOCAS DEL TORO
State/Province	
Country	PAN
Latitude	N 9° 20' 27.00"
Longitude	W 82° 15' 03.00"
Elevation	10
Longest Runway	4900
Magnetic Variance	E 1.0°
Fuel Type	No fuel is available.
Oxygen	Oxygen facilities are unavailable.
Repair Facility	Repair facilities are unavailable
Landing Fee	Unknown.
Jet Start Unit	A starting unit is not available at the airport.
Precision Approach	No charts for the airport support precision approaches
Beacon Light	A beacon light is not available.
Customs Facilities	Customs are available without restriction
Usage Type	Airport/Heliport is open to the public.
Time Zone Conversion	+5:00=UTC
Daylight Savings	Airport does not observe daylight savings time
Change Notices Available	none

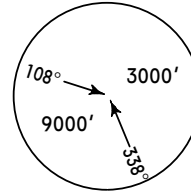
Terminal Chart Change Notices

TRANS LEVEL: BY ATC
TRANS ALT: 18000'

GEMER ONE DEPARTURE
(RWYS 08, 26)

This SID requires take-off minimums of:
 Rwy 08: 2 engines: 400' ceiling, 1600m visibility;
 3 or more engines: 400' ceiling, 800m visibility.
 Rwy 26: 2 engines: 200' ceiling, 1600m visibility;
 3 or more engines: 200' ceiling, 800m visibility.
 and the following minimum climb rate from
 take-off to:
 Rwy 08: 200'.
 Rwy 26: Crossing BDT VOR.

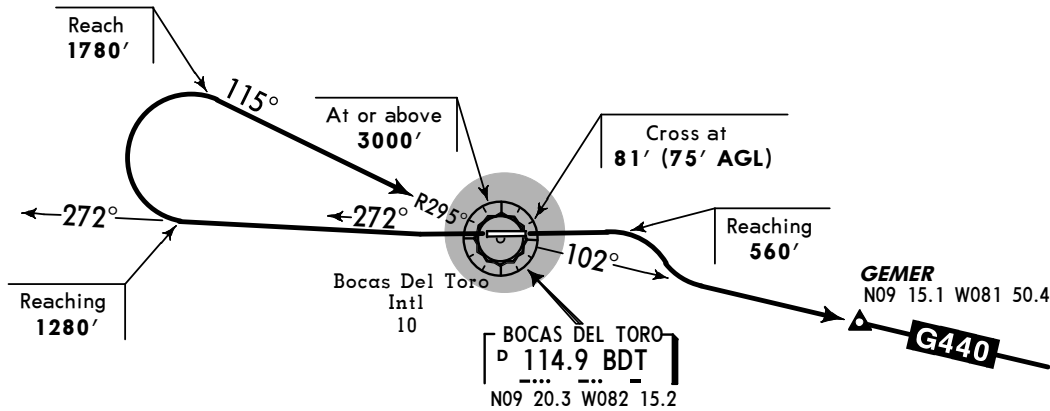
Gnd speed-Kts	75	100	150	200	250	300
Rwy 08 V/V (fpm)	438	583	875	1167	1458	1750
Rwy 26 V/V (fpm)	263	350	525	700	875	1050



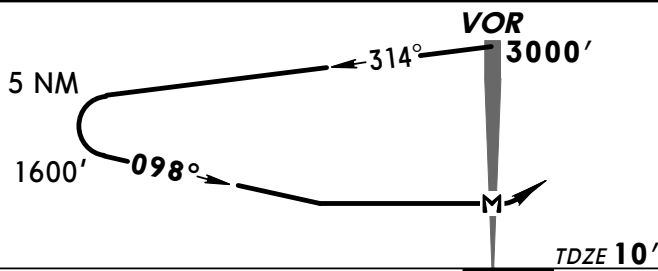
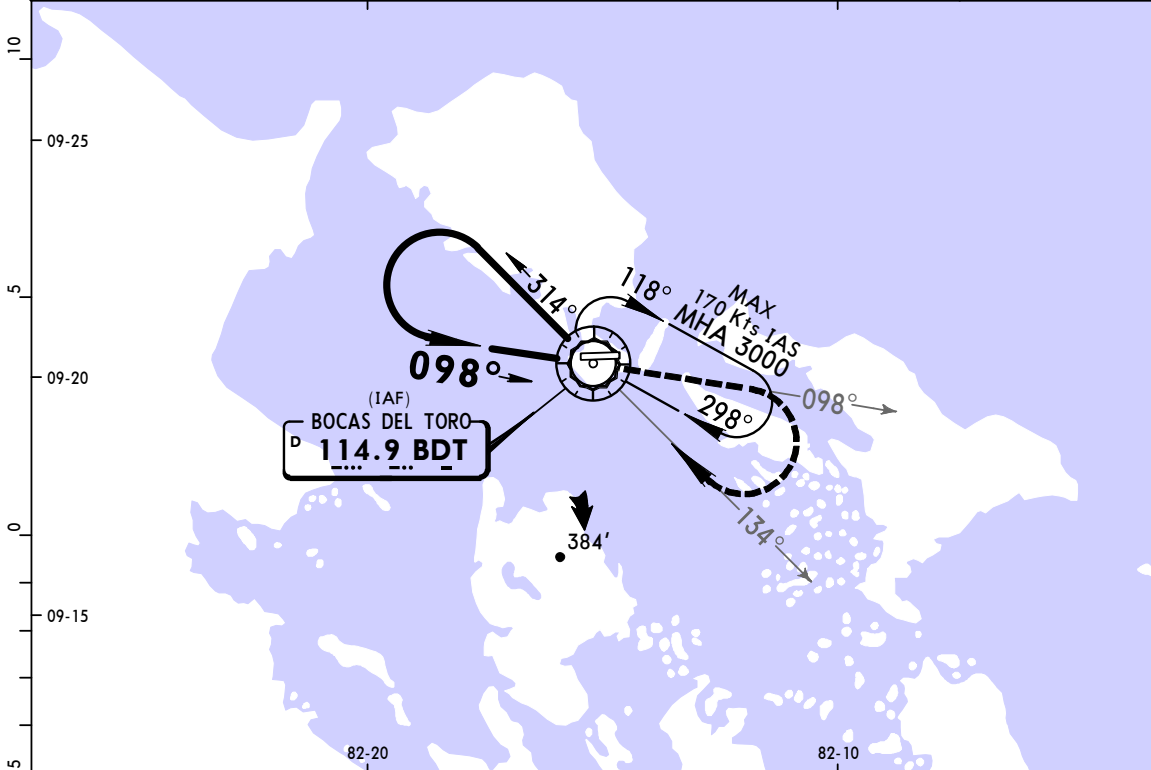
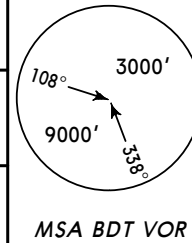
MSA
BDT VOR

DEPARTURE

Rwy 08: Cross Rwy 26 threshold at 81' (75' AGL), MAINTAIN runway heading and climb until reaching 560', turn RIGHT to intercept BDT R-102 (G440), then continue in accordance with ATC instructions.
Rwy 26: MAINTAIN runway heading until intercepting BDT R-272 and proceed climb until reaching 1280', turn RIGHT via BDT R-295 direct to BDT VOR, cross BDT VOR at or above 3000', continue in accordance with ATC instructions.



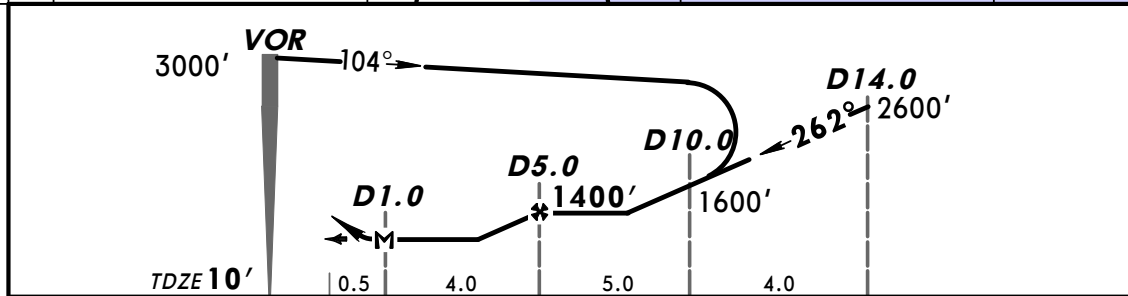
BRIEFING STRIP™	PANAMA Control NORTH 125.5 SOUTH 133.0		*BOCAS Tower 118.4		*Ground 121.6
	VOR BDT 114.9	Final Apch Crs 098°	No FAF	MDA(H) (CONDITIONAL) 580' (570')	Apt Elev 10' TDZE 10'
	<p>MISSED APCH: Climb outbound via BDT VOR R-098 until reaching 1500', turn RIGHT inbound via BDT VOR R-134 climbing to 3000' direct BDT VOR and hold.</p> <p>Alt Set: hPa TDZ Elev: 0 hPa Trans level: By ATC Trans alt: 18000'</p> <p>1. If altimeter setting not available, procedure not authorized. 2. Procedure not authorized at night. 3. In case of communications failure continue with instructions from ATC and published procedure.</p>				



MAP at VOR	1500'	BDT	3000'	BDT
	↑	via 114.9	↗	via 114.9
		R-098	RT	R-134

STRAIGHT-IN LANDING RWY 08		CEILING REQUIRED		CIRCLE-TO-LAND	
MDA(H) 580' (570')					
DAY		NIGHT	Max Kts	DAY	NIGHT
CEILING-VISIBILITY				MDA(H)	CEIL-VIS
600' - 1600m			90	580' (570')	600' - 1600m
			120		
NA		NA	C	NA	NA
			D		

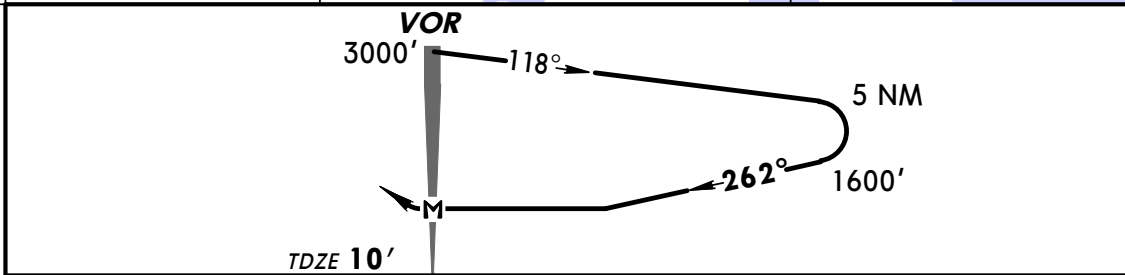
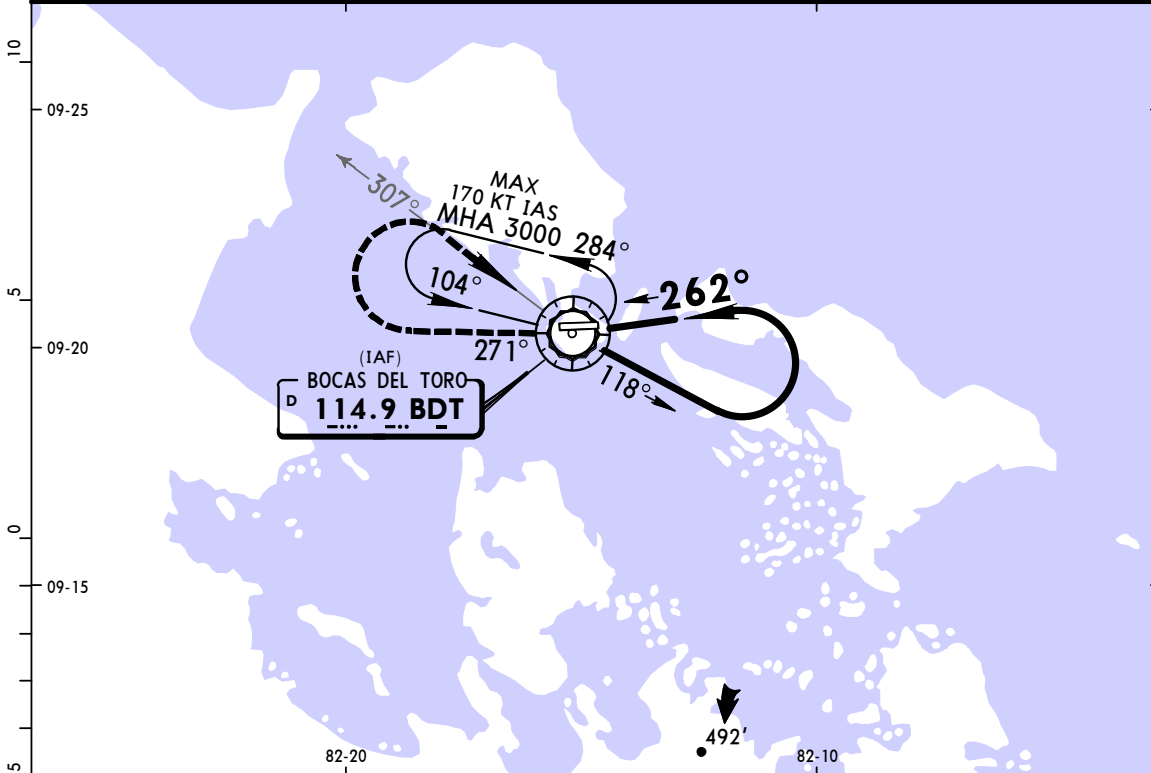
PANAMA Control NORTH 125.5 SOUTH 133.0		*BOCAS Tower 118.4		*Ground 121.6
VOR BDT 114.9	Final Apch Crs 262°	Minimum Alt D5.0 1400' (1390')	MDA(H) (CONDITIONAL) 600' (590')	Apt Elev 10' TDZE 10'
<p>MISSED APCH: Climb outbound via BDT VOR R-271 until reaching at or above 1500' at D8.0, turn RIGHT and climb to 3000' via BDT VOR R-292 direct BDT VOR and hold.</p> <p>Alt Set: hPa TDZ Elev: 0 hPa Trans level: By ATC Trans alt: 18000'</p> <p>1. If altimeter setting not available, procedure not authorized. 2. Procedure not authorized at night. 3. In case of communications failure continue with instructions from ATC and published procedure.</p>				
				<p>MSA BDT VOR</p>



Gnd speed-Kts	60	80	100	120	1500'	BDT via 114.9 R-271	D8.0
Rate of descent on final (feet/min)	320	420	520	620			
MAP at D1.0 or D5.0 to MAP	4.0	4:00	3:00	2:24	2:00		

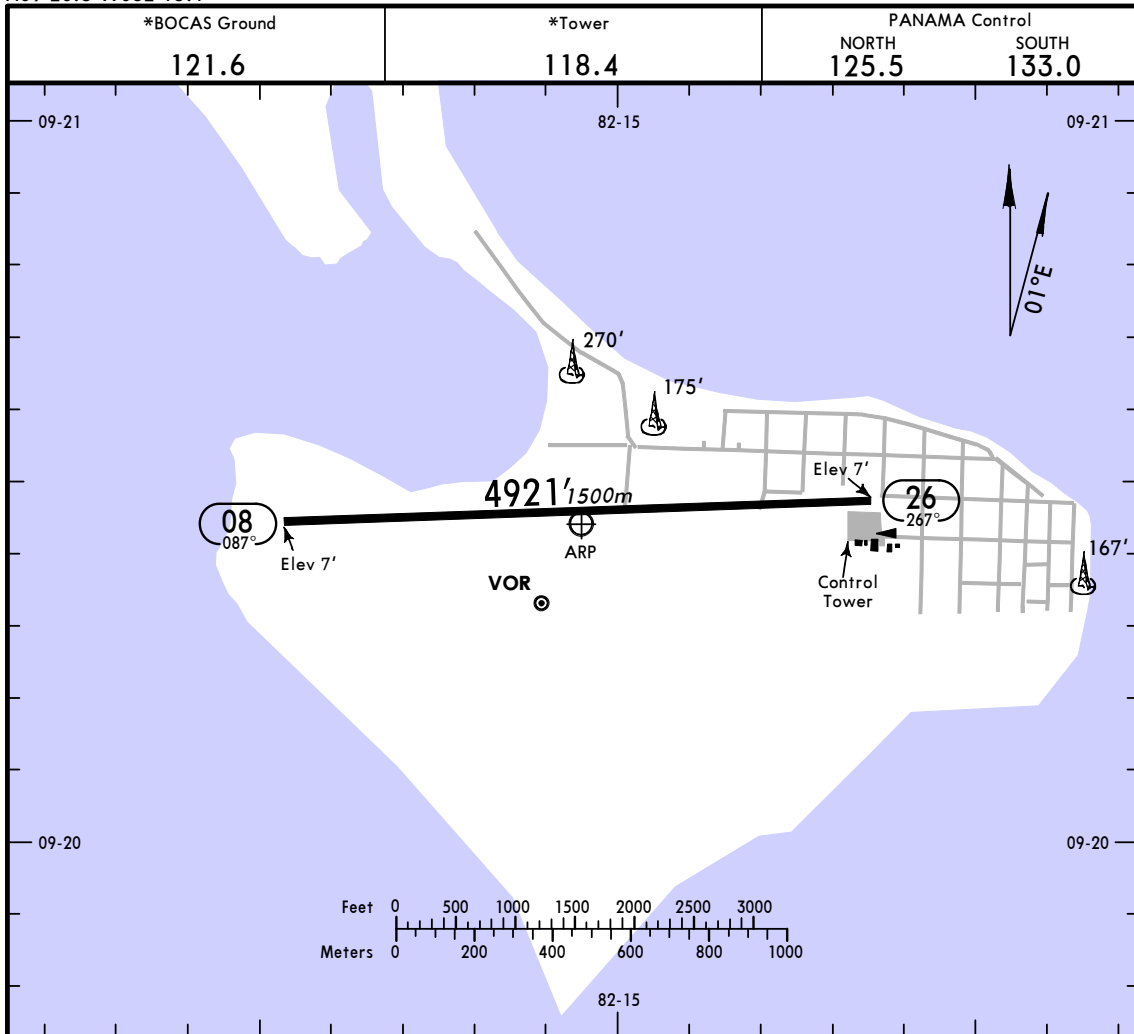
STRAIGHT-IN LANDING RWY 26		CEILING REQUIRED		CIRCLE-TO-LAND	
MDA(H) 600' (590')		DAY		NIGHT	
CEILING-VISIBILITY		DAY		NIGHT	
A	600' - 1600m	NA	Max Kts	MDA(H)	DAY CEIL-VIS
B			90	600' (590')	600' - 1600m
C			120		
C	NA	NA		NA	NA
D					

PANAMA Control NORTH 125.5 SOUTH 133.0		*BOCAS Tower 118.4		*Ground 121.6
VOR BDT 114.9	Final Apch Crs 262°	No FAF	MDA(H) (CONDITIONAL) 600' (590')	Apt Elev 10' TDZE 10'
MISSED APCH: Climb outbound via BDT VOR R-271 until reaching at or above 1500', turn RIGHT inbound via BDT VOR R-307 and climb to 3000' direct to BDT VOR and hold.				<p>MSA BDT VOR</p>
Alt Set: hPa TDZ Elev: 0 hPa Trans level: By ATC Trans alt: 18000' 1. If altimeter setting not available, procedure not authorized. 2. Procedure not authorized at night. 3. In case of communications failure continue with instructions from ATC and published procedure.				



MAP at VOR	1500' BDT via 114.9 R-271	3000' BDT via 114.9 R-307
------------	---------------------------	---------------------------

STRAIGHT-IN LANDING RWY 26		CEILING REQUIRED		CIRCLE-TO-LAND	
MDA(H) 600' (590')		DAY		NIGHT	
DAY CEILING-VISIBILITY		Max Kts	MDA(H)	CEIL-VIS	NIGHT
A	600' - 1600m	90	600' (590')	600' - 1600m	NA
B		120			
C	NA	C	NA	NA	NA
D		D			



ADDITIONAL RUNWAY INFORMATION

RWY	LANDING BEYOND	USABLE LENGTHS		TAKE-OFF	WIDTH
		Threshold	Glide Slope		
08 26	RL				66' 20m

TAKE-OFF

	Rwy 26	Rwy 08
2 Eng	200' - 1600m	400' - 1600m
3 & 4 Eng	200' - 800m	400' - 800m