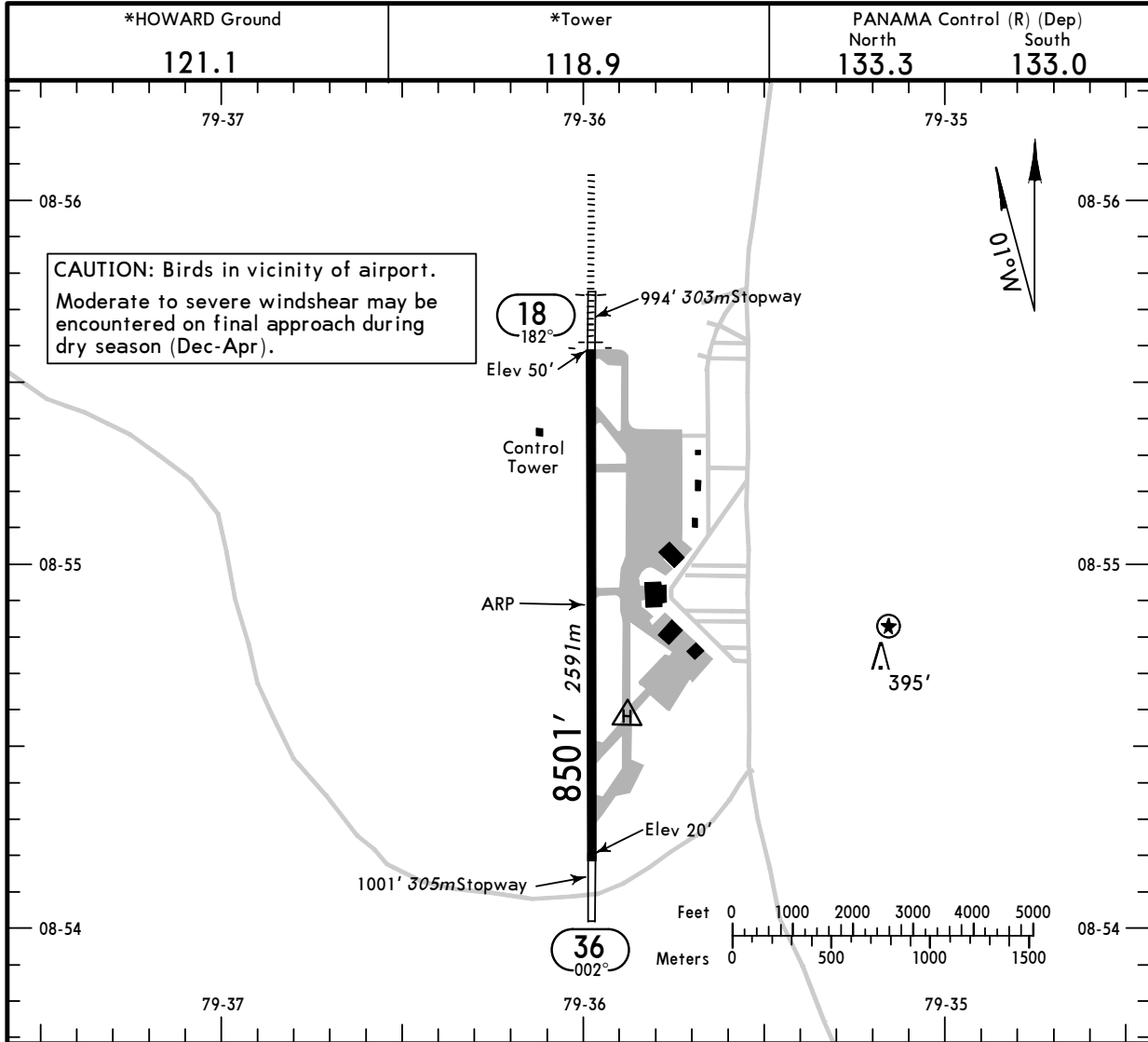


MPHO
 Apt Elev **51'**
 N08 54.9 W079 36.0

JEPPESEN
 11 JAN 08 **(10-9)**

BALBOA, PANAMA
 HOWARD INTL



ADDITIONAL RUNWAY INFORMATION

RWY		USABLE LENGTHS			WIDTH
		Threshold	Landing Beyond Glide Slope	TAKE-OFF	
18	MIRL REIL ALSF-I				148'
36	MIRL REIL RVR				45m

TAKE-OFF

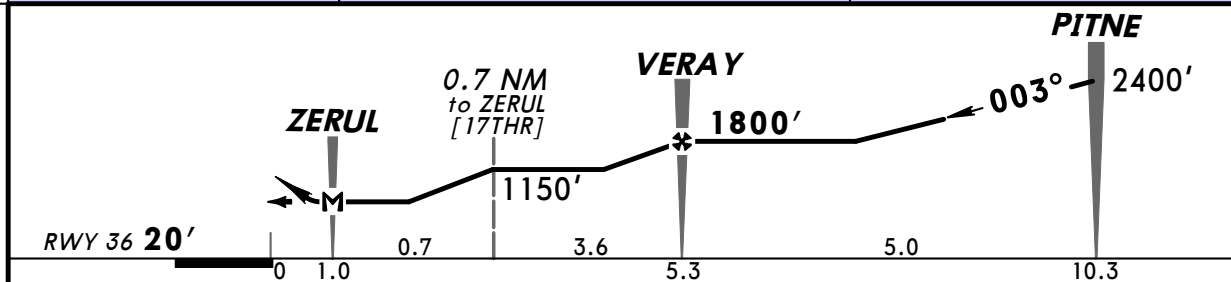
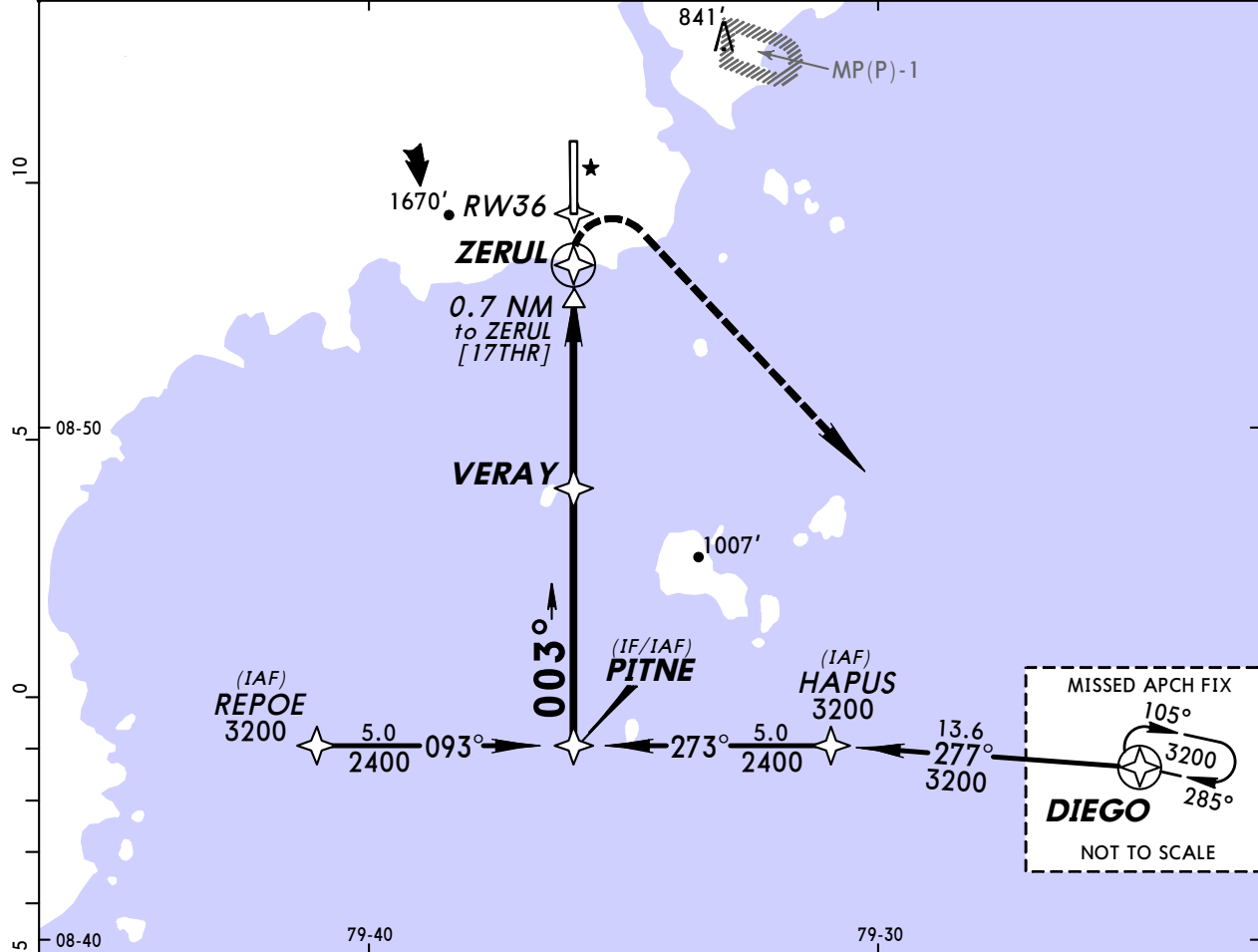
	AIR CARRIER (JAA)		AIR CARRIER (FAR 121)	
	LVP must be in force All Rwys RCLM (Day only) or RL	All Rwys RCLM (Day only) or RL	All Rwys Adequate Vis Ref	
A			2 Eng	
B	RVR 250m	RVR 400m	3 & 4 Eng	400m
C				
D	RVR 300m			

MPHO
 HOWARD INTL

JEPPESEN
 11 JAN 08 (12-1)

BALBOA, PANAMA
 RNAV (GNSS) Rwy 36

PANAMA Control (R) North 133.3 South 133.0		PANAMA Approach 119.7		*HOWARD Tower 118.9	*Ground 121.1
RNAV	Final Apch Crs 003°	Minimum Alt VERAY 1800' (1780')	LNAV MDA(H) 600' (580')	Apt Elev 51' Rwy 36 20'	5000' MSA RW36
MISSED APCH: Climbing RIGHT turn to 3200' direct to DIEGO and hold.					
Alt Set: hPa		Rwy Elev: 1 hPa	Trans level: FL 180	Trans alt: 18000'	
1. CAUTION: Concentrated bird activity daily. 2. If local altimeter setting not received, procedure not authorized.					



MAP at ZERUL	REIL	3200'	RT	D	DIEGO
--------------	------	-------	----	---	-------

STRAIGHT-IN LANDING RWY36		CEILING REQUIRED	
LNAV		CIRCLE-TO-LAND	
MDA(H) 600' (580')		Not Authorized West of Rwy 18-36	
		Max Kts	MDA(H) — CEIL-VIS —
A		90	720' (669') 670' - 2000m
B	2000m	120	720' (669') 670' - 2800m
C	2200m	140	720' (669') 670' - 3200m
D	2800m	165	720' (669') 670' - 3200m

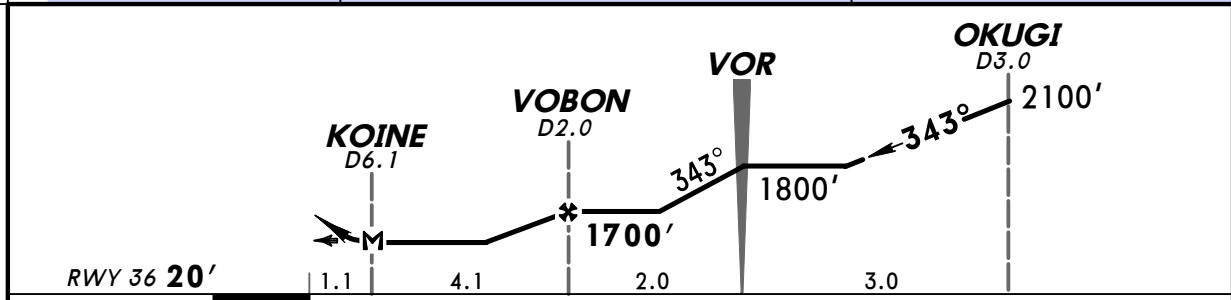
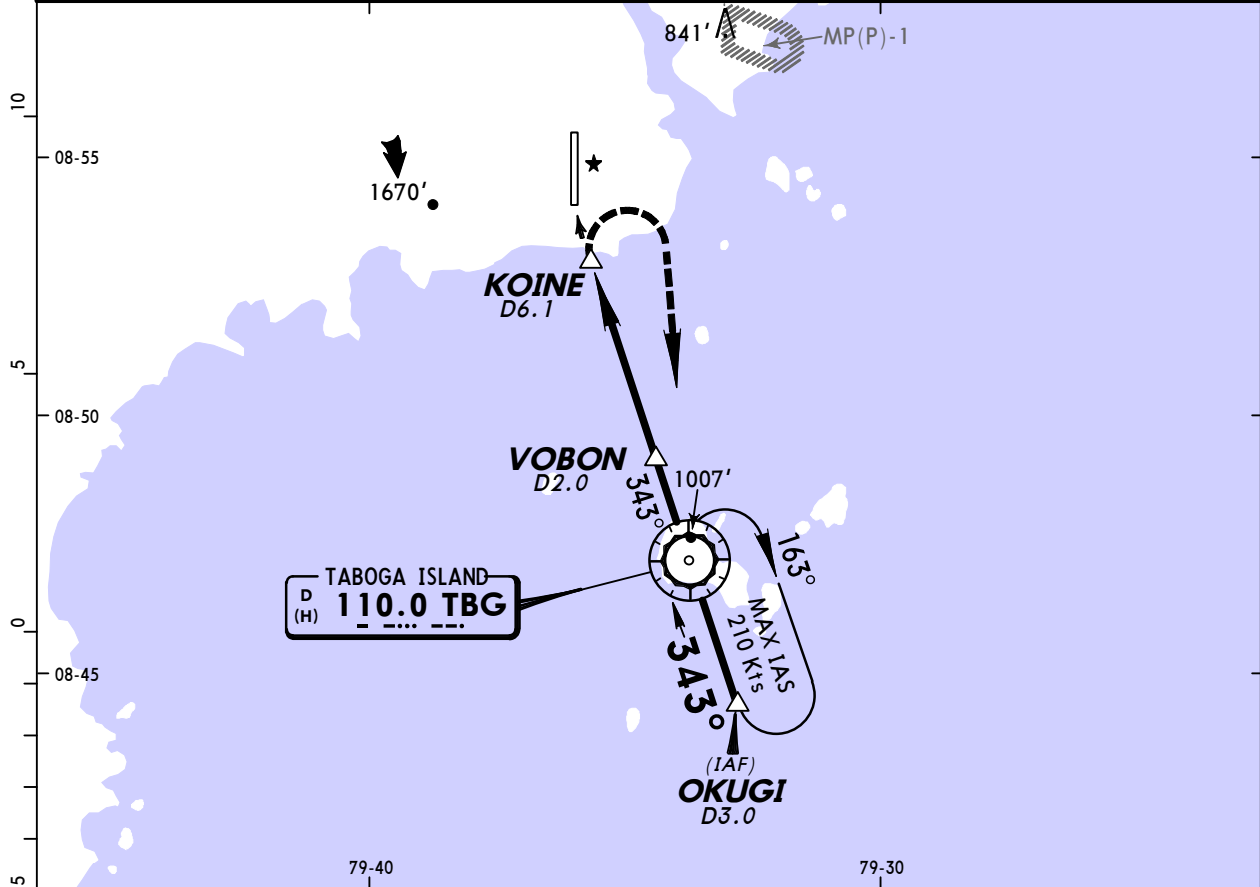
CHANGES: New procedure.

MPHO
 HOWARD INTL

JEPPESEN
 11 JAN 08 **(13-1)**

BALBOA, PANAMA
 VOR DME Rwy 36

BRIEFING STRIP™	PANAMA Control (R) North 133.3 South 133.0		PANAMA Approach 119.7		*HOWARD Tower 118.9		*Ground 121.1	
	VOR TBG 110.0	Final Apch Crs 343°	Minimum Alt VOBON 1700' (1680')	MDA(H) 740' (720')	Apt Elev 51' Rwy 36 20'		<p>MSA TBG VOR</p>	
	MISSED APCH: Climbing RIGHT turn to 3000' direct TBG VOR and hold.							
Alt Set: hPa Rwy Elev: 1 hPa Trans level: FL 180 Trans alt: 18000' 1. CAUTION: Concentrated bird activity daily. 2. CAUTION: High terrain North and West of airport. 3. If local altimeter setting not received, procedure not authorized.								



Gnd Speed-Kts	60	80	100	120	140	160	REIL	3000'	D →	TBG 110.0
Rate of descent on final (feet/min)	316	421	527	632	737	843				
MAP at KOINE or FAF to MAP	4.1	4:06	3:05	2:28	2:03	1:45				

STRAIGHT-IN LANDING RWY 36			CEILING REQUIRED	CIRCLE-TO-LAND		
MDA(H) 740' (720')			Not Authorized West of Rwy 18-36			
	CEILING-VISIBILITY		Max Kts	MDA(H)	CEIL-VIS	
A	710' - 2800m		90	740' (689')	710' - 2800m	
B	710' - 3800m		120	740' (689')	710' - 3800m	
C	710' - 4200m		140	740' (689')	710' - 4200m	
D	710' - 4200m		165	740' (689')	710' - 4200m	