

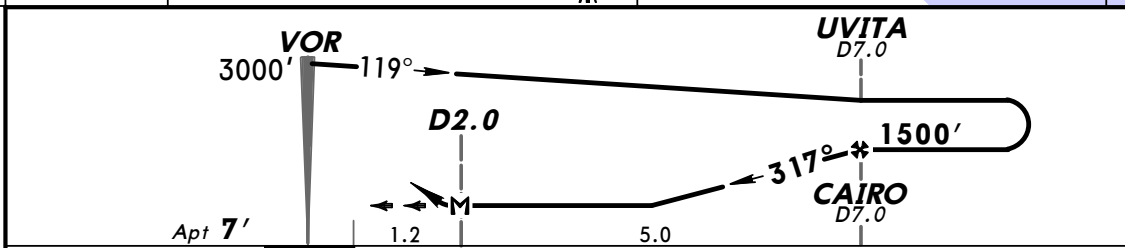
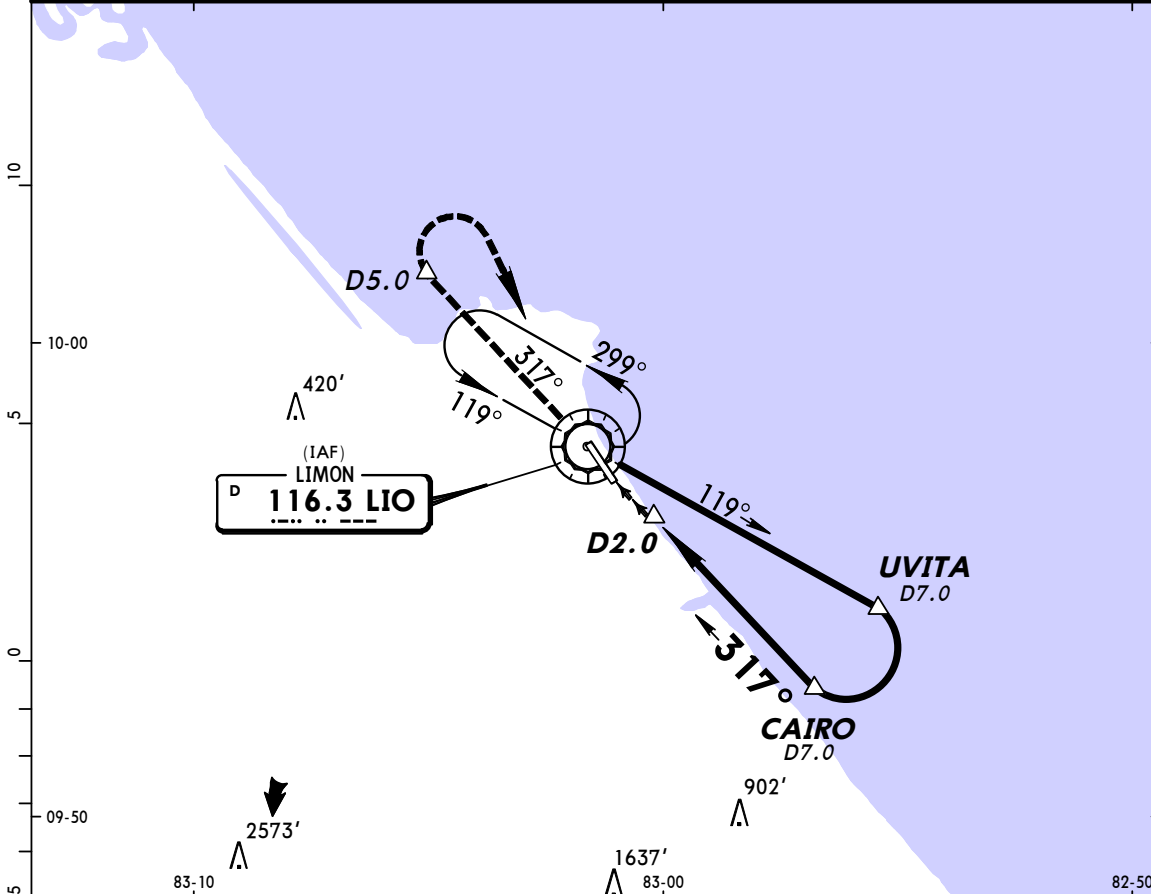
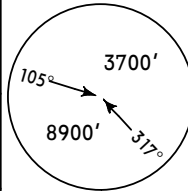
## Airport Information

Details for LIMON INTL	
City	PUERTO LIMON
State/Province	
Country	CRI
Latitude	N 9° 57' 28.44"
Longitude	W 83° 01' 19.31"
Elevation	7
Longest Runway	5900
Magnetic Variance	W 1.0°
Fuel Type	100 Low Lead (LL) octane fuel is available JET A-1 fuel is available
Oxygen	Oxygen facilities are unavailable.
Repair Facility	Repair facilities are unavailable
Landing Fee	Unknown.
Jet Start Unit	A starting unit is not available at the airport.
Precision Approach	No charts for the airport support precision approaches
Beacon Light	A beacon light is available.
Customs Facilities	Customs are available without restriction
Usage Type	Airport/Heliport is open to the public.
Time Zone Conversion	+6:00=UTC
Daylight Savings	Airport does not observe daylight savings time
Change Notices Available	none

## Terminal Chart Change Notices

---

*LIMON INTL Radio (AFIS) <b>118.8</b>			*LIMON INTL UNICOM <b>123.0</b>		
VOR LIO <b>116.3</b>	Final Apch Crs <b>317°</b>	Minimum Alt CAIRO <b>1500'</b> (1493')	MDA(H) <b>620'</b> (613')	Apt Elev <b>7'</b>	
<b>MISSED APCH:</b> Climb outbound via LIO VOR R-317 to D5.0, then climbing RIGHT turn to LIO VOR and hold. Cross LIO VOR at or above 3000'.					
Alt Set: hPa		Apt Elev: 0 hPa	Trans level: FL 200	Trans alt: 19000'	
					MSA LIO VOR



Gnd speed-Kts	70	90	100	120	140	160	REIL AVASI	LIO via <b>116.3</b> <b>R-317</b>	<b>D5.0</b>
MAP at D2.0 or CAIRO to MAP 5.0	4:17	3:20	3:00	2:30	2:09	1:53			

STRAIGHT-IN LANDING RWY 32	<b>CEILING REQUIRED</b>	CIRCLE-TO-LAND
MDA(H) <b>620'</b> (613')		
CEILING-VISIBILITY		

A	700' - 1.6 km	A	NA
B		B	
C		C	
D		D	

PANS OPS

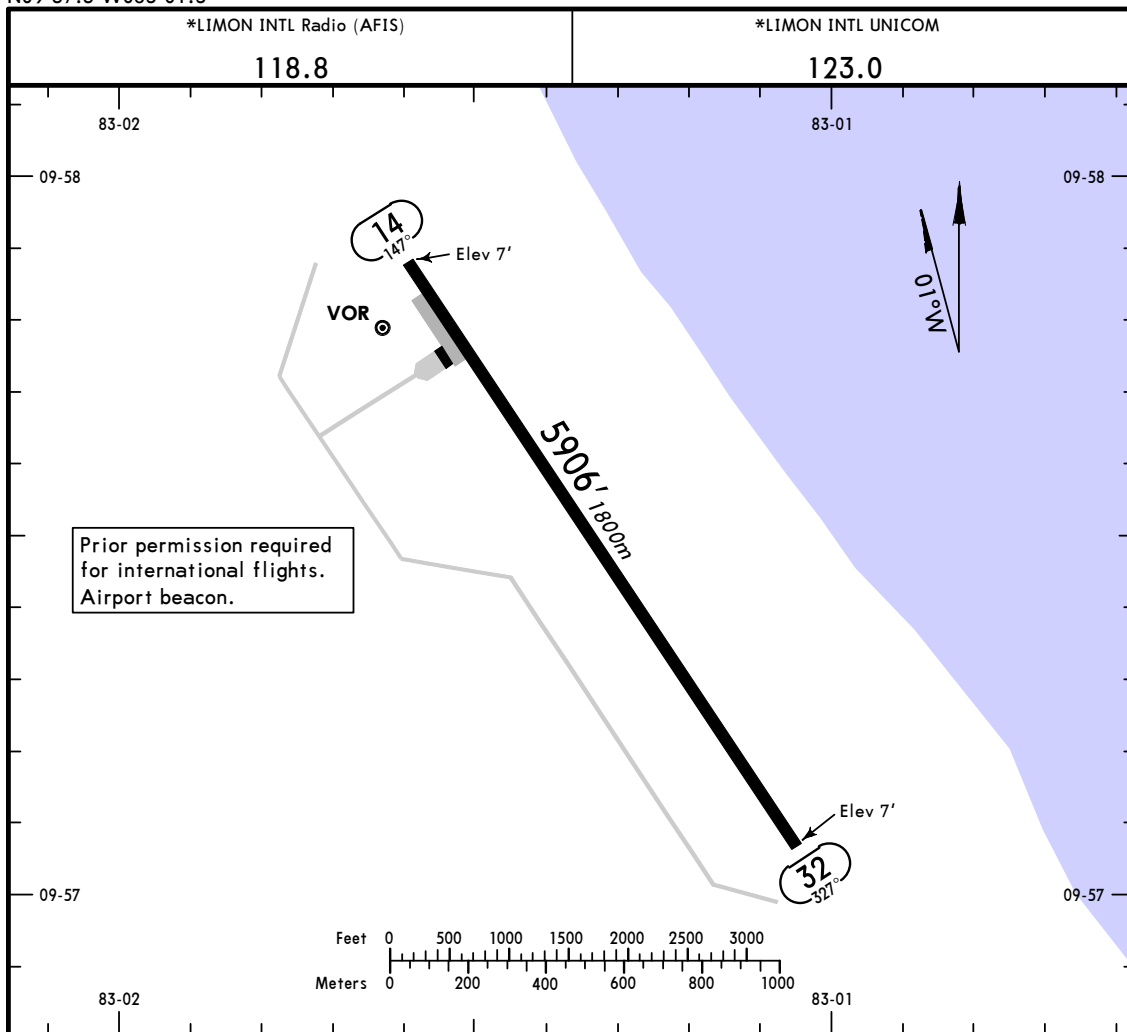
MRLM/LIO

Apt Elev 7'  
N09 57.5 W083 01.3

**JEPPESEN** PUERTO LIMON, COSTA RICA

30 SEP 11 (13-1)

LIMON INTL



ADDITIONAL RUNWAY INFORMATION

RWY	MIRL	REIL	AVASI	USABLE LENGTHS		TAKE-OFF	WIDTH
				Threshold	Glide Slope		
14	MIRL	REIL					98'
32	MIRL	REIL	AVASI				30m

TAKE-OFF		FOR FILING AS ALTERNATE	
All Rwy's			
1 & 2 Eng	1000'-3.0 km	A	700'-2.0 km
3 & 4 Eng		B	
		C	NA
		D	